

Neater Eater Robotic (NER)

Set-Up Manual

User's Version

CE



Neater Solutions Ltd.

www.neater.co.uk

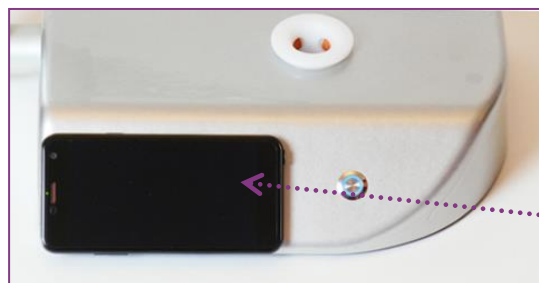
April 2024

PLEASE NOTE

Your Neater Eater Robot may have been in storage for some time and may require charging before use.

To charge:

- Connect the 2-part power lead that you received in the box.
- Plug the power supply into the rear of the robot and the other end into the wall socket.
- Place the tablet onto the front panel of the robot to charge it. Due to magnets on the tablet and within the robot, it will stick.
- A full charge will take approximately 8 hours; the robot can be used while plugged in once there is a small amount of charge in the tablet, normally 15%.



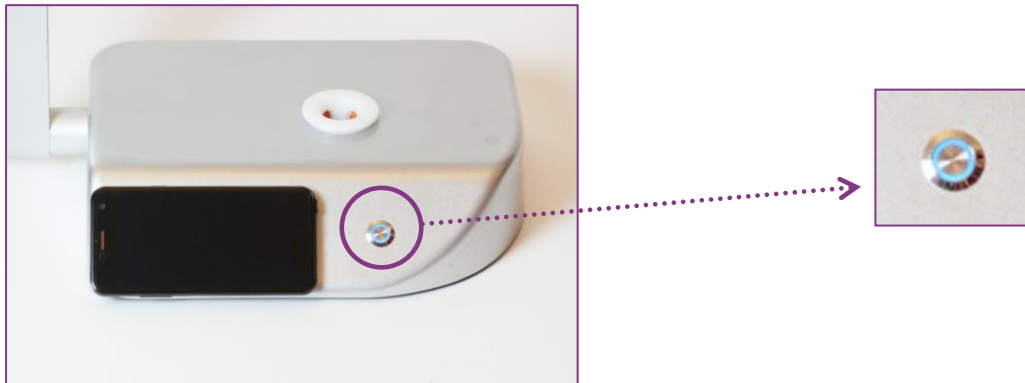
- These are the items you will find in the box of a standard Neater Eater Robotic.

Note: Your robot may have some different accessories depending on your order e.g. your crockery and cutlery may be different.

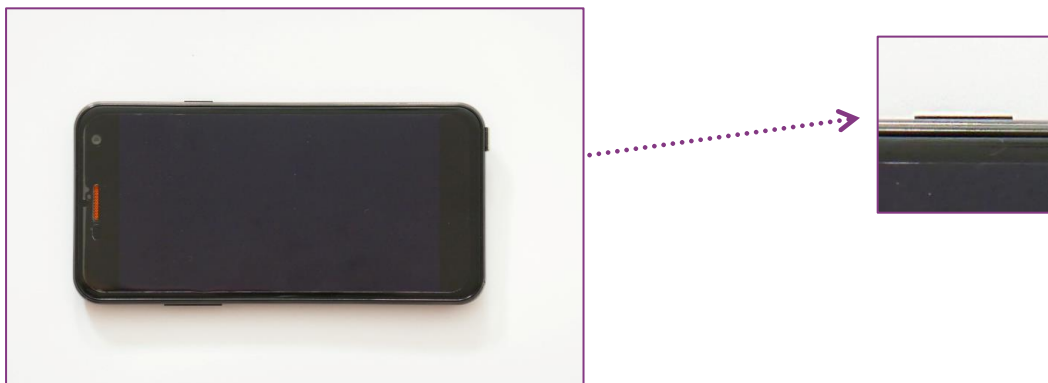


- Place the tablet here to charge but when charged can be used in a more convenient position eg. on your lap or a chair mounted phone holder.

- Switch on the robot by pressing this button on the front. It will light up blue as shown.



- Switch on the tablet by keeping this small button pressed for a few seconds. You will feel a small vibration when the phone is switched on; release the button.



- After a sequence of displays, an introductory video will play.



- Now you will be asked if you want to enable Voice Control. To enable Voice Control you need to say “*Voice Control.*”



Enabling voice control enables you to operate your Neater Robot by simply speaking the text displayed on the tablet's buttons. For instance whilst eating, the button labelled *Plate Left/Right* will turn the plate to the right a little if you say *Plate Right*.

When the robot asks you a question or gives you information, saying *Neater continue* or *Robot continue* will usually confirm and continue onto the next stage.

There are additional hidden voice commands you can say including: *Turn the plate* starts continuous rotation of the plate until you say: *Stop*.

Neater help or *Robot help* will open help document where you can navigate by saying: *Top, Next, Speed up, Slow down, Scroll up, Scroll down, Exit, Stop*.

Neater videos or *Robot videos* opens the menu of help videos.

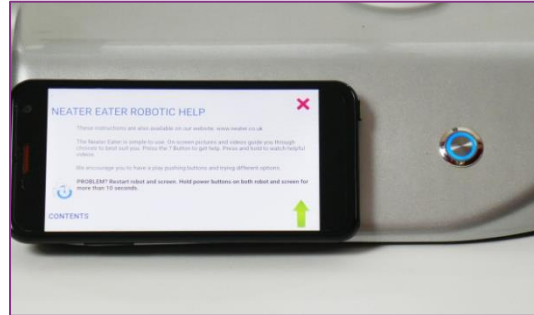
Speech control is paused sometimes, for instance when audio or video files are being played and in Advanced Settings. Text ending with the symbol | cannot be used for voice control.

You can turn on and off Voice Control in:

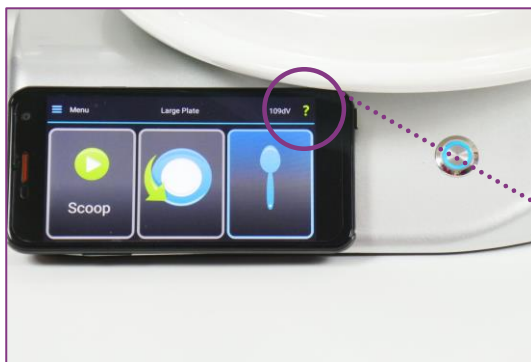
Settings > More Settings > Sounds and Voice. To Turn on Voice Control you must say *Voice Control.*



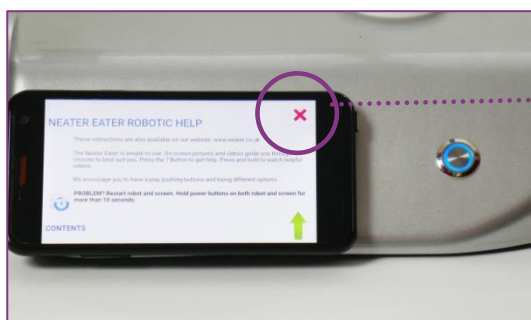
- Now you will be prompted to press the question mark to read and confirm the health and safety instructions.



Note: You can read the instructions again at any time, by pressing the question mark icon in the top right-hand corner of the screen. It will open at the relevant section. Or say *Neater help* or *Robot help*.



- To exit the instructions press the red cross in the corner. Or say *Exit*.



Then confirm you have read the instructions by pressing the tick icon. Or say *Continue*.



- When prompted, plug the spoon onto the robot as shown here.



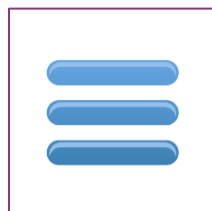
- The robot then moves the spoon to a pre-set position for the mouth. A screen will appear with three options, 'Continue' 'Adjust Mouth' or 'I am not user name'



- Select or say “Continue” if the mouth position and username are correct.
- Selector say “I am not user name” to select a different user.
- Select or say “Adjust Mouth” to teach the robot your mouth position (you will need to do this the first time you use it).
- A video animation will prompt you to move the spoon close to your mouth; you can do this by hand. Make sure you select save afterwards.

Note: You can change this again later by pressing the menu icon in the top left hand corner of the screen. Select the Mouth Position icon, and prompts will guide you to change the settings.

Menu



Mouth Position

Your robot is nearly ready for you to eat with!

- When prompted, place the plate onto the robot, as shown here. Make sure it is pushed all the way down.



- You will then be presented with the option of selecting which plate you have put onto the robot. If you know which it is, you can manually select which plate you have by pressing or saying "Select Plate" and choosing from the options as shown below.
- Alternatively, press or say 'Check Plate Now', and the robot will automatically do it for you. As you get used to your Neater Eater you may find selecting the plate manually is faster than the robot finding the plate.

- Ensure your food is cut into bite-sized pieces that will fit onto the cutlery you have chosen.

Press or say 'Scoop' to begin, and enjoy your meal!

